



A BEGINNER'S
**GUIDE TO
GARDNER**
2018-2019

WHO'S WHO

FACULTY & STAFF

STAFF



Scott Kerman
Head of School



Melinda DiCillo
Front Office /
Operations



Jessie Mohandessi
Enrollment



Angela Maguire
Communications &
Marketing



Sheila Hughes
Business
Operations

AFTERCARE / EXTENDED DAY



Willis Taylor
Aftercare



Shara Parker
Aftercare

EARLY CHILDHOOD (PRE-SCHOOL) HOMEROOMS



Deborah Simons
Tumtum Teacher
(preschool)



Betsy Jager-Lee
Mazama Teacher
(pre-K)



Jason Kaiser
Mazama Assistant

E-MAIL

All faculty and staff members have a Gardner School email address. To contact anyone on this list via email, use the initial of their first name and their full surname followed by gardnerschool.org.

For example, to contact Scott, use:
skerman@gardnerschool.org

PTO CHAIR: ptochair@gardnerschool.org

BOARD CHAIR: boardchair@gardnerschool.org

ELEMENTARY SCHOOL (K-4) HOMEROOMS



Rose Hout
Kalama Teacher
(Kindergarten)



Jackie Taylor
Loowit East Teacher
(1st / 2nd)



Missy Gladski
Loowit West Teacher
(1st / 2nd)



Amelia Carter
Wy'East Teacher
(3rd / 4th)



Norma Bliley
Assistant Teacher
(Elementary)

MIDDLE SCHOOL (5-8) HOMEROOMS



Michelle Gault
Assistant Teacher
(Elementary)



Ingrid Dahl
Assistant Teacher
(Elementary)



Emily Davis
Klickitat Teacher
(5th / 6th)



Guinevere Getchell
Tahoma Teacher
(7th / 8th)



Courtney Tomlinson
Assistant Teacher
(Middle School)

SPECIALISTS



Jane Rhomberg
Art Teacher
(K - 4th)



Betsy Jager-Lee
Art Teacher
(5th - 8th)



Jared Renfro
Science Teacher
(3rd - 8th)



Ingrid Dahl
Science Teacher
(K - 2nd)



Peter Pickett
P.E. / Health Teacher
(EC - 8th)



Maria Flores
Spanish Teacher
(EC, 1st - 4th)



Shara Parker
Spanish Teacher
(5th - 8th)



Norma Bliley
Spanish Teacher
(Kindergarten)



Dana Harris
Music Teacher
(EC - 4th)



Jason Kaiser
Music Teacher
(5th - 8th)

WHAT'S WHERE?

GARDNER CAMPUS AT A GLANCE

1

Employee Parking
(Gravel Lot)

2

Farmhouse
(Admin Offices / Meeting Space)

3

Gardner Garden

4

Loading / Unloading Zone
No parking area

5

Imagination Playground
(Early Childhood Play Area)

6

Tumtum Classroom
(Preschool)

7

Main Building
(Front Office, Classrooms, Great Room)

8

Four-Square & Basketball Courts
Dismissal Area (K-8)*

9

Wy'East (3rd / 4th Grade) Classroom
Science Classroom

10

Klickitat (5th / 6th Grade) Classroom
Tahoma (7th / 8th Grade) Classroom

11

Gardner Wetlands

12

Playground (K-8)

13

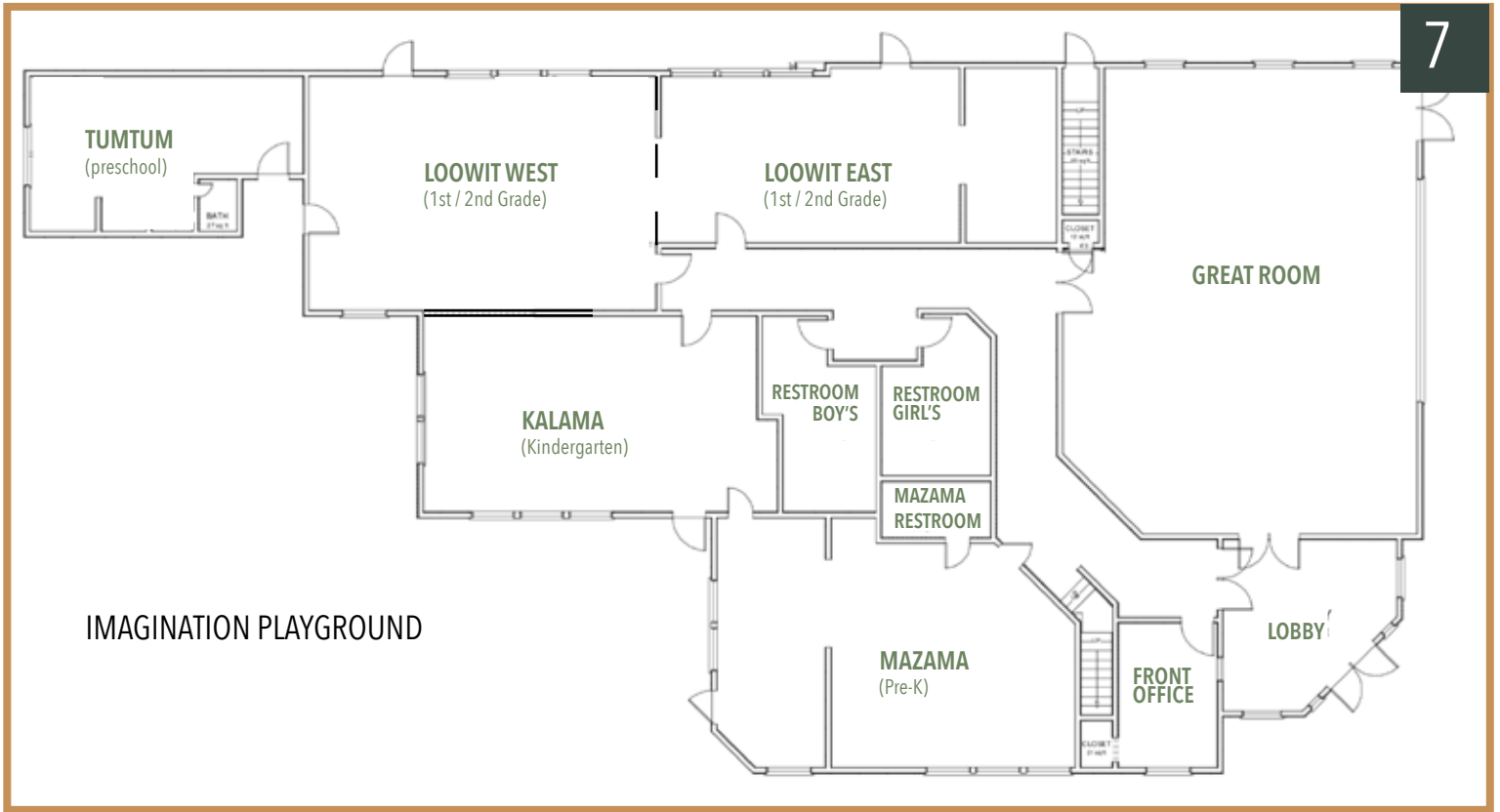
Field's Field

14

Visitor Parking
(Unless marked "Reserved")



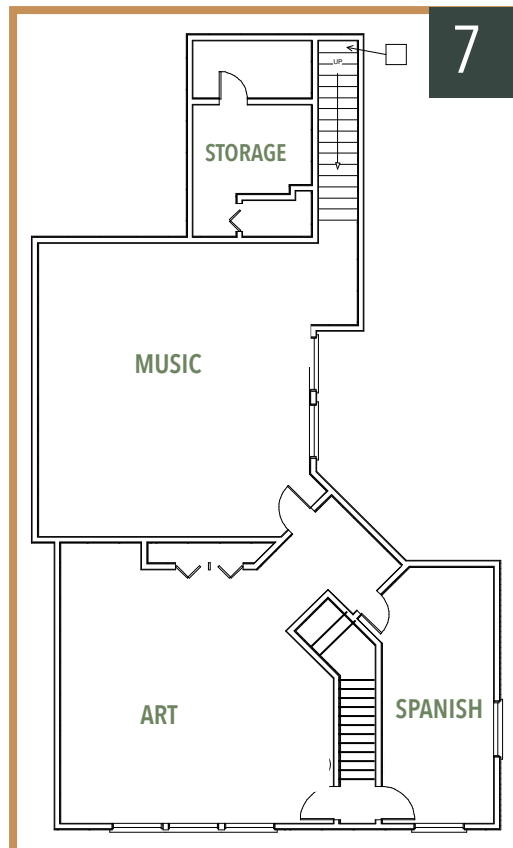
WHAT'S WHERE? (continued)



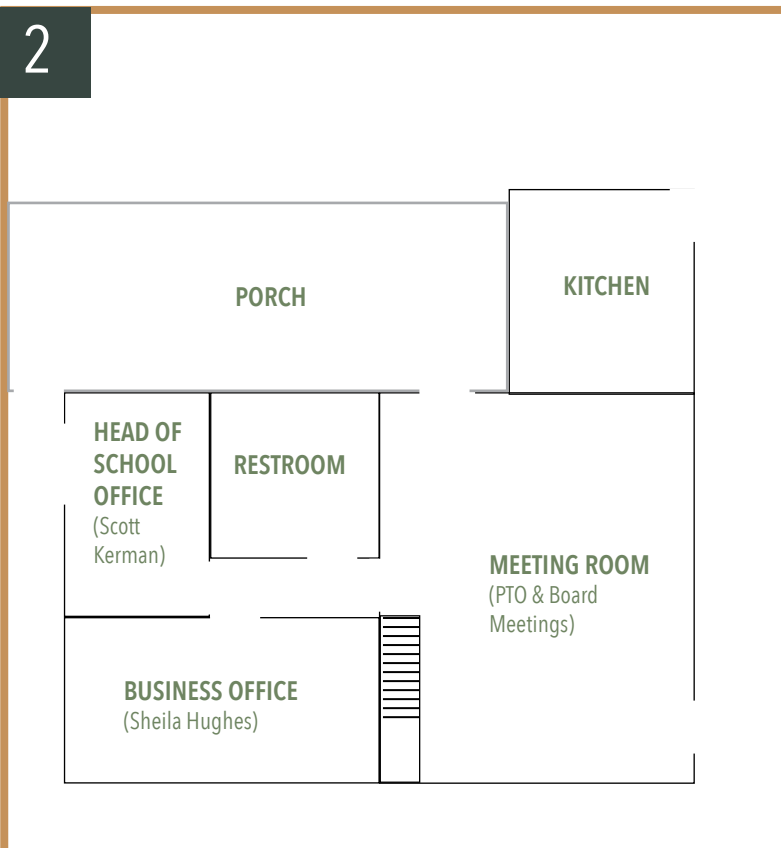
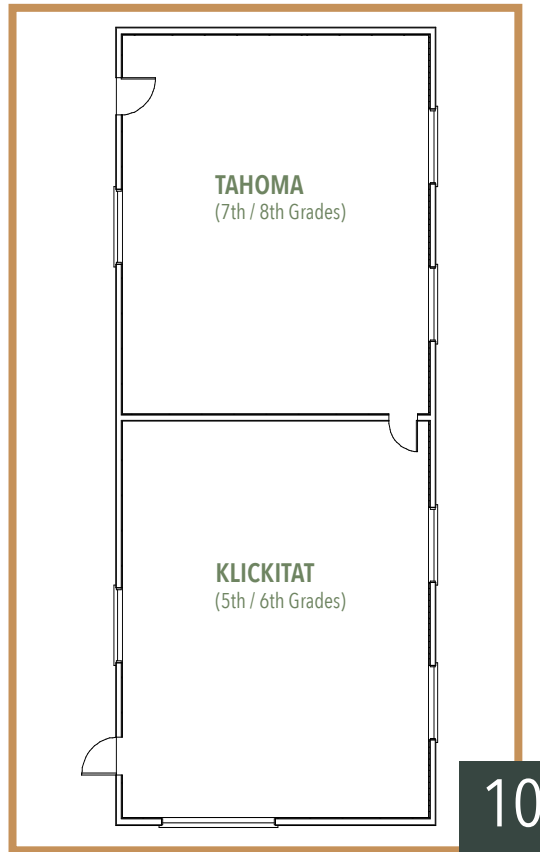
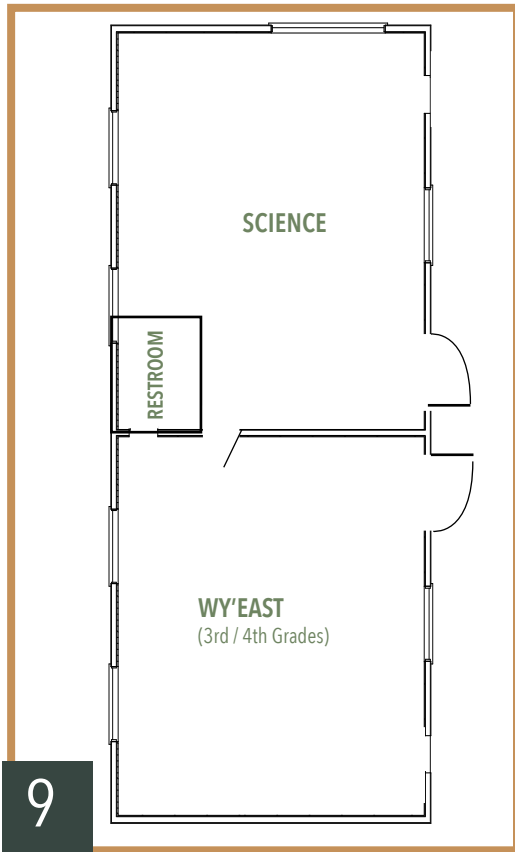
FIRST FLOOR

MAIN BUILDING

SECOND FLOOR



PORTABLES



FARMHOUSE

WHAT'S WHEN?

KEEPING TRACK OF GARDNER EVENTS



1 Subscribe to school & classroom calendars on **GOOGLE CALENDAR**

[CLICK HERE FOR CALENDARS](#)



2 Check **EVENT GUIDES** for details about each event on the calendar.

[CLICK HERE FOR EVENT GUIDES](#)



3 Save a copy of the Gardner Important Dates PDF

[CLICK HERE FOR THE PDF](#)

OPERATING HOURS

EARLY LEARNING (TUMTUM / MAZAMA)

8:30am-12:00pm

KALAMA

Mon-Fri 8:30am-1:45pm (Sept-Dec)

Mon, Tue, Thu, Fri 8:30am-3:30pm (Jan-June)

Wed 8:30am – 1:45pm (all year)

LOOWIT-TAHOMA

Mon, Tue, Thu, Fri 8:30am-3:30pm

Wed 8.30am – 1:45pm

EXTENDED CARE HOURS

Before School: 7:15-8:15am

After School: Until 6:30pm

Students are allowed in their classrooms beginning at 8:15am.

Any students on campus 15 minutes after school ends will be checked in to aftercare.

UPCOMING EVENTS

FRIDAY, AUGUST 24 New Family & Early Childhood Parent Orientation
(Parents Only)

TUESDAY, AUGUST 28 Early Childhood
Student Meet & Greet

WEDNESDAY, AUGUST 29 First Day of School
[Welcome Back Parent Coffee Hour](#)

WEDNESDAY, SEPTEMBER 5 First PTO Meeting (8:45am / Farmhouse)
[Klickitat & Tahoma Curriculum Night](#)
(Parents Only)

FRIDAY, SEPTEMBER 7 [Sweat Equity Day*](#)
& [Welcome Back Potluck](#)

WEDNESDAY, SEPTEMBER 12 [Kalama, Loowit, Wy'East Curriculum Night](#)
(Parents Only)

*volunteer opportunity

IMPORTANT LINKS

BACK TO SCHOOL LINKS

[LOGIN TO GARDNER PORTAL](#)

[BACK TO SCHOOL CHECKLIST](#)

[REGISTRATION FORMS TO SIGN](#)

[IMMUNIZATION INFORMATION](#)

[SCHOOL SUPPLIES](#)

[EXTENDED CARE INFORMATION](#)

[ALL SCHOOL PARENT HANDBOOK](#)

VOLUNTEERING

[VOLUNTEER INTEREST FORM](#)

[SIGN UP FOR SPECIFIC VOLUNTEERING](#)

[VOLUNTEER BACKGROUND CHECKS](#)

[LOG VOLUNTEER HOURS](#)

CALENDAR & EVENT INFO

[EVENTS CALENDAR / GOOGLE CALENDARS](#)

[EVENT GUIDES](#)

BUSINESS LINKS

[PAY TUITION VIA SMART TUITION](#)

[SCHOOL AUCTION WEBSITE](#)

[BUY A YEARBOOK](#)

STAY UP TO DATE

[SCHOOL NEWSLETTERS / MAGAZINE](#)

[GARDNER WEBSITE](#)

[GARDNER FACEBOOK](#)

[GARDNER INSTAGRAM](#)



SCHOOL MISSION



The Gardner School inspires students to actively seek knowledge and understanding, think independently, reason critically, and embrace challenge. Teaching to the uniqueness of each individual, we focus on the process of learning and value the exchange of ideas through collaborative work, inspiring all learners to reach their highest potential. While building knowledge of self and an awareness of their connection to others, our students develop responsibility for themselves, their community, the earth and humanity.

FOLLOW US:



Facebook: GARDNERSCHOOL



Instagram: THEGARDNERSCHOOLWA

CONTACT INFO:

16413 NE 50th AVE, Vancouver, WA 98686
360.574.5752
www.gardnerschool.org

